



CEPI study of collection systems in Europe

COST E 48 “The Limits of Paper Recycling“
10-11 May 2006, Milan

Task Force „Collection Systems“

TF Members: Angeles Blanco, Giorgio Capretti, Andreas Faul, Ruben Miranda,
Alf Strunz

Task

- CEPI has made a survey about RCP collection systems in 30 countries
- 15 answers were received
- Only a brief evaluation of the answers was made

=> Task Force shall combine the answers with statistical data in order to find driving forces and influences on collection rates

=> If necessary, Task Force shall recommend further studies



Source: CEPI Study “Collection Systems”

Contents:

- General data of population density and GDP
- P&B production figures in eight different grades
- Total P&B production and consumption
- Data about municipal waste
- RCP collection figures, partly in detail (overleaf)
- Verbal information about packaging waste management systems and their legal frameworks



Source: CEPI Study “Collection System”

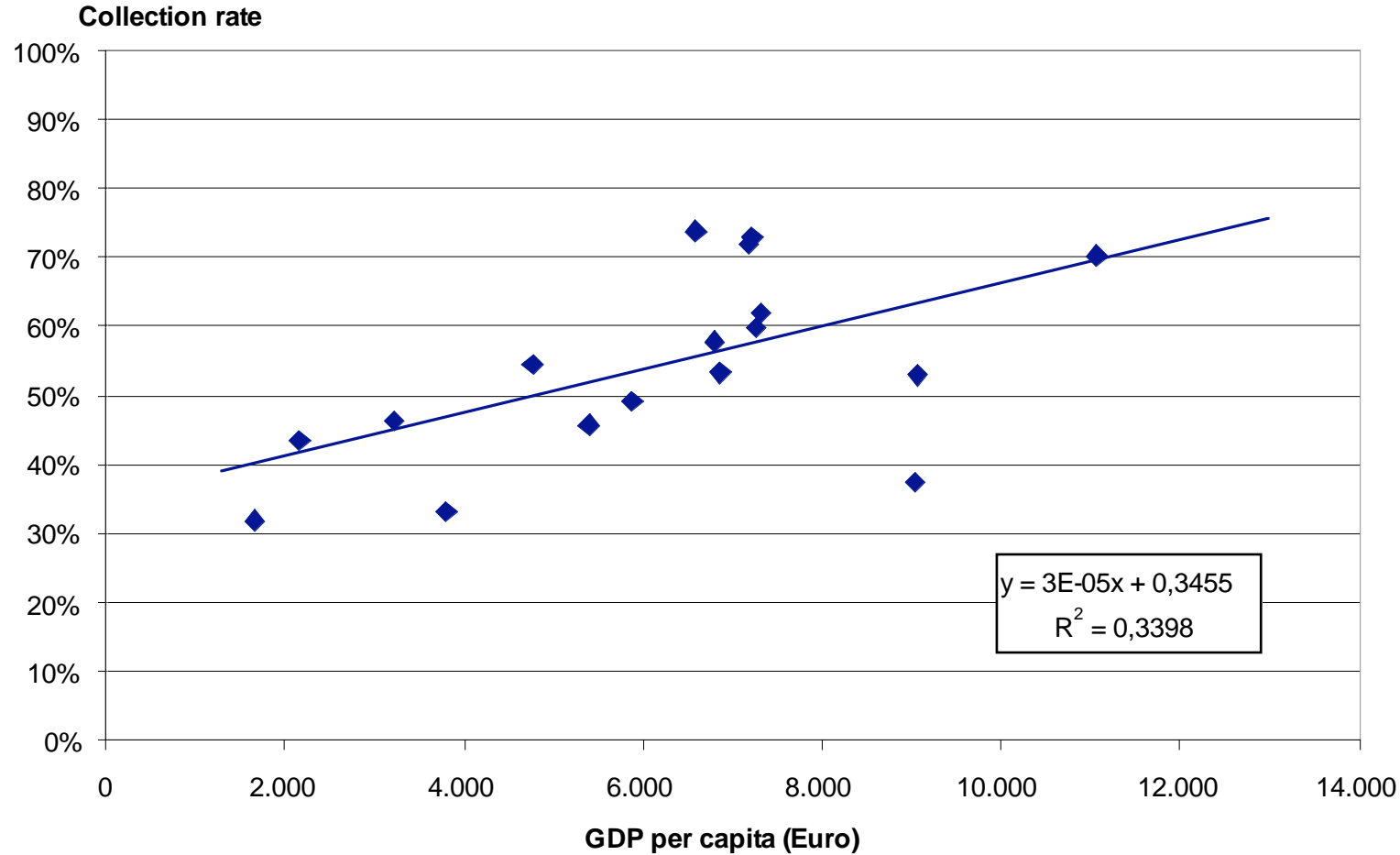
Assessment of the Study:

- Contains production, consumption and collection data from all CEPI and EU 25 countries
- Details of the share of post-consumer household and industry/trade, pre-consumer RCP are available for some countries only.
- The study obviously focuses on packaging grades
- It is a very detailed survey of the legal framework of packaging recycling
- Technical details of RCP collection systems are not part of the study
- Data of collection costs were requested, but not received



Statistical Evaluation of the CEPI Study

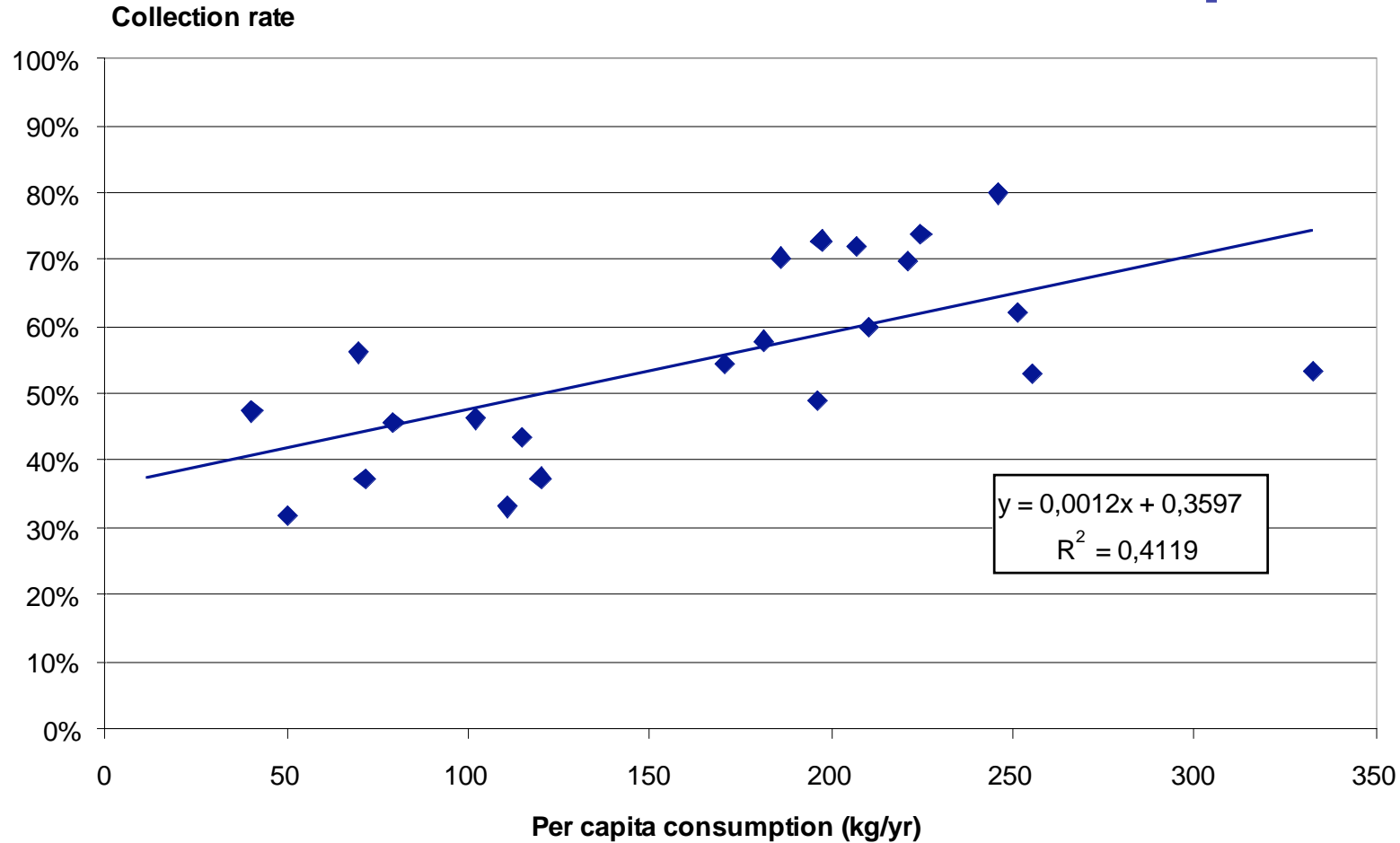
Collection Rate vs. GDP per capita



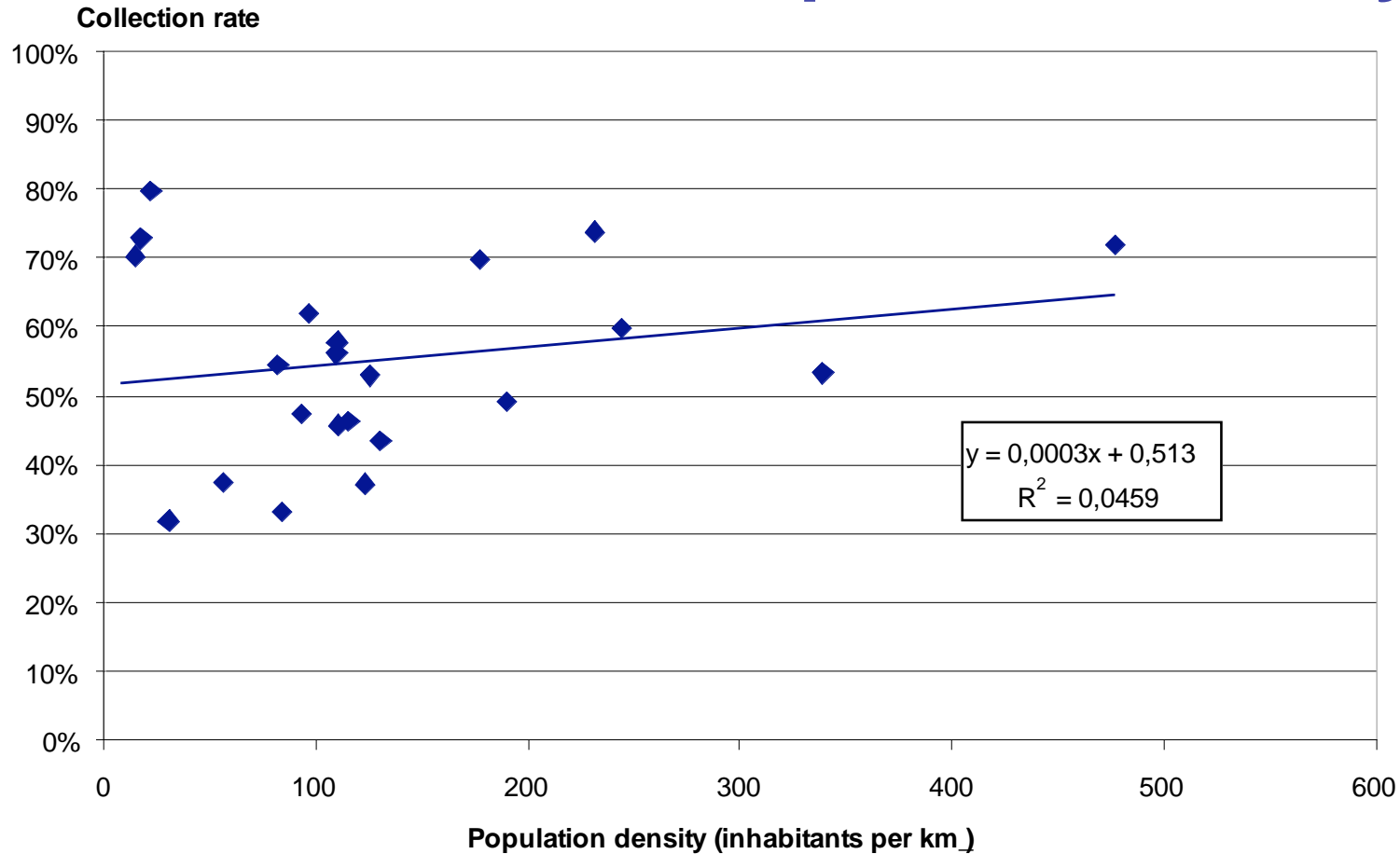
COST E 48: The Limits of Paper Recycling

Statistical Evaluation of the CEPI Study

Collection Rate vs. P&B Consumption

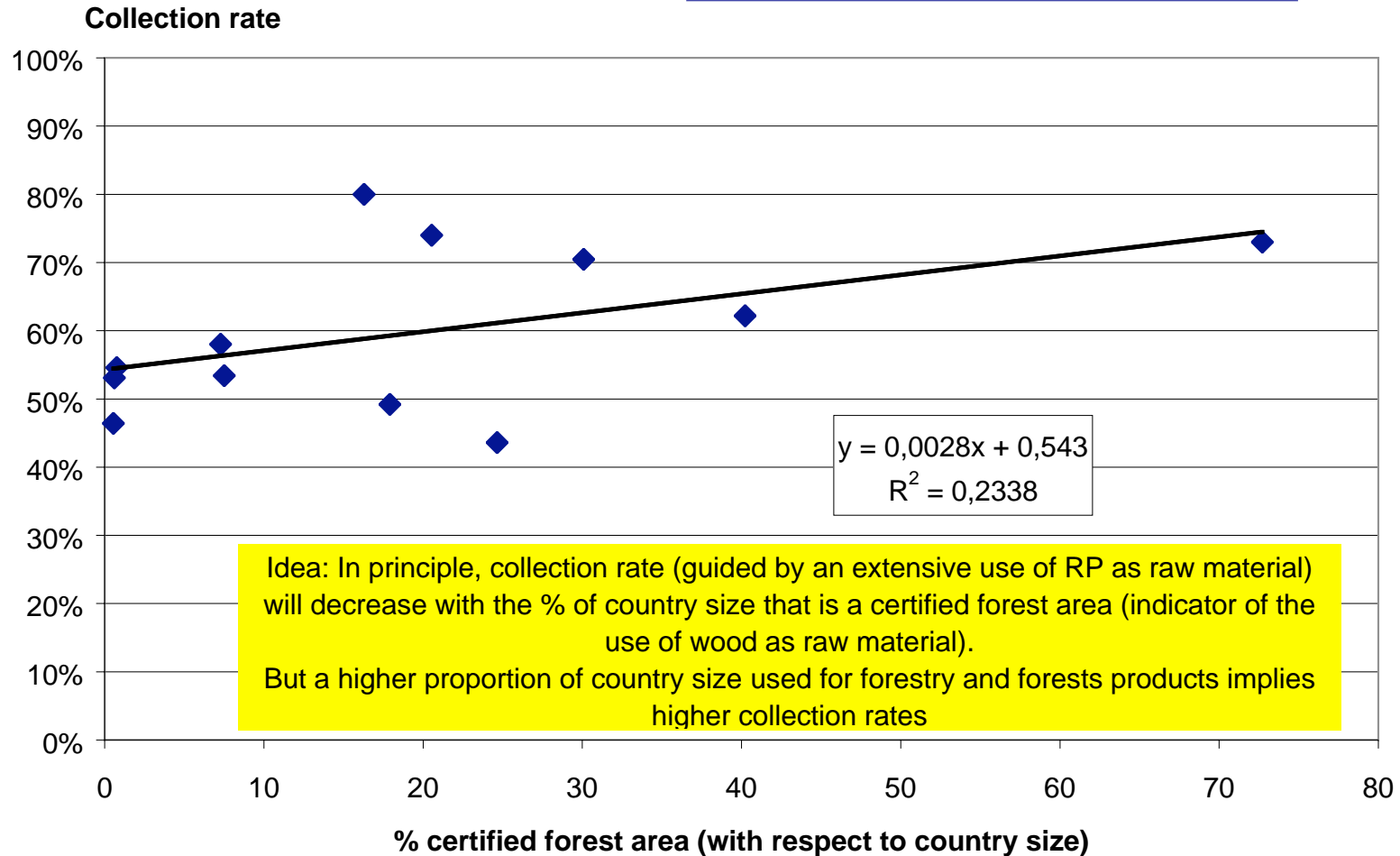


Statistical Evaluation of the CEPI Study Collection Rate vs. Population Density



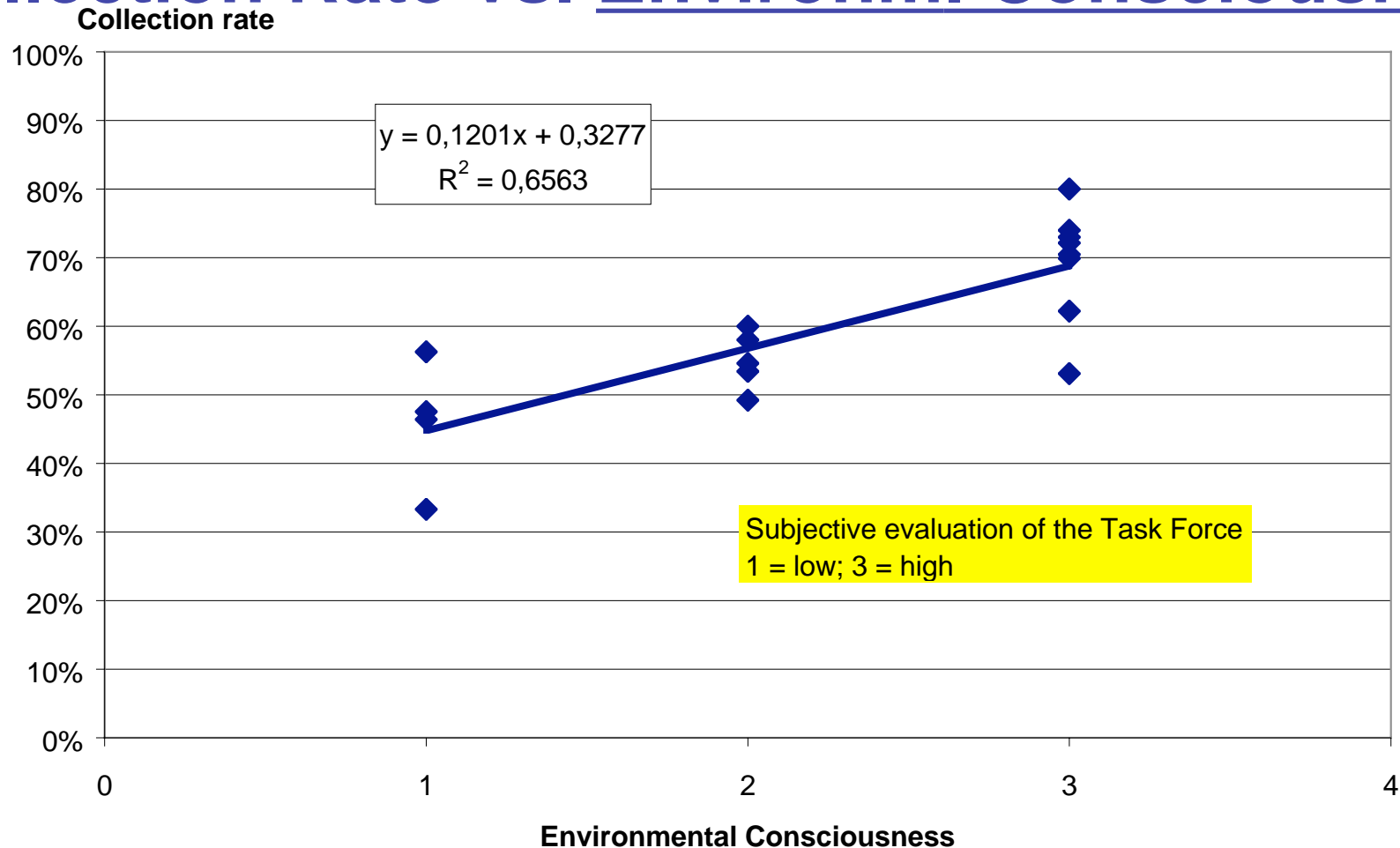
Statistical Evaluation of the CEPI Study

Collection Rate vs. Certified Forests



Statistical Evaluation of the CEPI Study

Collection Rate vs. Environm. Consciousness



COST E 48: The Limits of Paper Recycling

Conclusions (1)

- The RCP collection rate increases with the P&B consumption, the GDP and the environmental consciousness (the last one by subjective evaluation)
- The influence of the P&B consumption and the GDP is significant
- Environmental consciousness is obviously the main driving force
- The population density has only little influence
- Collection rate is not driven by utilisation rate
- There is an unexpected correlation of the collection rate vs. the share of certified forests (= intensity of wood usage) in a country



Conclusions (2)

- The data are not precise enough to assess which are the best collection systems
- The objective of the Task Force is to give guidance how to increase collection rates
 - In countries with low collection rate the environmental consciousness has to be developed (= education)
 - In countries with already high collection rate the collection systems have to be optimised for further increase

